

PAPER

Tip-Pressure-Induced Incoherent Energy Gap in $\text{CaFe}_2\text{As}_2^*$

To cite this article: Jia-Xin Yin *et al* 2016 *Chinese Phys. Lett.* **33** 067401

View the [article online](#) for updates and enhancements.

You may also like

- [Distinct evolution of charge occupations on Fe 3d orbitals in hole-doped iron arsenic superconductors](#)
Ming-Cui Ding, Li-Min Wu, Gang Zhao et al.
- [Electronic transport properties of \$M\text{Fe}_2\text{As}_2\$ \(\$M = \text{Ca, Eu, Sr}\$ \) at ambient and high pressures up to 20 GPa](#)
Natalia V Morozova, Alexander E Karkin, Sergey V Ovsyannikov et al.
- [Pressure-induced change of the electronic state in the tetragonal phase of \$\text{CaFe}_2\text{As}_2\$](#)
Yui Sakaguchi, Shugo Ikeda, Tetsuji Kuse et al.

Tip-Pressure-Induced Incoherent Energy Gap in CaFe_2As_2 *

Jia-Xin Yin(殷嘉鑫)^{1,2}, Ji-Hui Wang(王霁辉)², Zheng Wu(吴诤)², Ang Li(李昂)^{2,4}, Xue-Jin Liang(梁学锦)¹, Han-Qing Mao(毛寒青)¹, Gen-Fu Chen(陈根富)¹, Bing Lv(吕兵)², Ching-Wu Chu(朱经武)², Hong Ding(丁洪)^{1,3}, Shu-Heng Pan(潘庶亨)^{1,2,3**}

¹Institute of Physics, Chinese Academy of Sciences, Beijing 100190

²Department of Physics and Texas Center for Superconductivity, University of Houston, Houston 77004, USA

³Collaborative Innovation Center of Quantum Matter, Beijing 100190

⁴Shanghai Institute of Microsystem and Information Technology, Chinese Academy of Sciences, Shanghai 200050

(Received 7 April 2016)

In CaFe_2As_2 , superconductivity can be achieved by applying a modest *c*-axis pressure of several kbar. Here we use scanning tunneling microscopy/spectroscopy (STM/S) to explore the STM tip pressure effect on single crystals of CaFe_2As_2 . When performing STM/S measurements, the tip-sample interaction can be controlled to act repulsive with reduction of the junction resistance, thus to apply a tip pressure on the sample. We find that an incoherent energy gap emerges at the Fermi level in the differential conductance spectrum when the tip pressure is increased. This energy gap is of the similar order of magnitude as the superconducting gap in the chemical doped compound $\text{Ca}_{0.4}\text{Na}_{0.6}\text{Fe}_2\text{As}_2$ and disappears at the temperature well below that of the bulk magnetic ordering. Moreover, we also observe the rhombic distortion of the As lattice, which agrees with the orthorhombic distortion of the underlying Fe lattice. These findings suggest that the STM tip pressure can induce the local Cooper pairing in the orthorhombic phase of CaFe_2As_2 .

PACS: 74.55.+v, 74, 74.62.Fj

DOI: 10.1088/0256-307X/33/6/067401

Superconductivity in $R\text{Fe}_2\text{As}_2$ ($R=\text{Ca}$, Sr , and Ba) emerges with chemical doping or physical pressure.^[1–3] BaFe_2As_2 and SrFe_2As_2 can reach the highest T_C as 38 K by chemical doping and their critical pressure for superconductivity is as high as 40–60 kbar.^[4] In contrast, CaFe_2As_2 can be tuned into a superconductor with T_C up to 49 K through rare earth element doping.^[5] Interestingly, applying hydrostatic pressure cannot tune CaFe_2As_2 into a superconductor,^[6] while the superconducting critical temperature exceeding 10 K can be achieved by applying a *c*-axis pressure as low as 5 kbar.^[1,2] Moreover, in addition to the tetragonal phase and the orthorhombic phase, with the smallest unit cell volume in 122 families, CaFe_2As_2 can also be tuned into the collapsed tetragonal phase by applying pressure.^[7] The pressure-induced superconductivity and the collapsed phase, together with the other two phases usually coexist at the mesoscopic level.^[8–11] Accordingly, there are intense debates on which phase the pressure-induced superconductivity emerges.

Tantalized by the aforementioned novel phenomena induced with modest pressure in CaFe_2As_2 , we decide to study the scanning tunneling microscope tip pressure effect on this material, as the atomically sharp STM tip can introduce a significant pressure. In our experiments, single crystal samples are cleaved in cryogenic ultra-high vacuum and imaged

with tungsten tips. Single crystalline samples of BaFe_2As_2 , SrFe_2As_2 , and $\text{Ca}(\text{Na})\text{Fe}_2\text{As}_2$ used in our experiments are grown by using the self-flux method. The cleaved crystal of CaFe_2As_2 often exposes the As surfaces.^[12,13] Figure 1(a) shows a group of typical line-cut differential conductance spectra taken on As-dimer-row surface of CaFe_2As_2 at 4.2 K, which reveal an incoherent gap opened at the Fermi level. Since the bulk sample is deeply in the antiferromagnetic spin density wave (SDW) state at 4.2 K, we first discuss whether the gap could be related to the SDW. Theoretically, an SDW gap generally does not require the particle-hole symmetry with respect to zero-energy,^[14] and it would be unusual for an SDW gap to open just at the Fermi level. Moreover, from the temperature dependence of the spectra shown in Fig. 1(b), we find that the incoherent gap feature disappears at 18 K, well below the bulk SDW temperature ($T_{\text{SDW}} = 150$ K). Therefore, the particle-hole symmetry nature of the gap structure and its much lower disappearing temperature than T_{SDW} basically exclude its origin from the SDW.

In fact, such gap structure is quite unusual among parent 122 systems. In our scanning tunneling microscopic/spectroscopic (STM/S) studies of BaFe_2As_2 and SrFe_2As_2 , as displayed in Fig. 1(c), no such spectral feature is captured. On the other hand, when comparing it with the coherent superconducting gap

*Supported by the National Natural Science Foundation of China under Grant No 11227903, the National Basic Research Program of China under Grant Nos 2015CB921300 and 2012CB933000, the State of Texas through TcSUH, and the Strategic Priority Research Program B of Chinese Academy of Sciences under Grant Nos XDB07030000, XDB04040300 and Y4VX092X81.

**Corresponding author. Email: span@iphy.ac.cn

© 2016 Chinese Physical Society and IOP Publishing Ltd

structure of $\text{Ca}_{0.4}\text{Na}_{0.6}\text{Fe}_2\text{As}_2$ ($T_C = 33\text{ K}$)^[15] as shown in Fig. 1(c), we find that their gap value is of the same order of magnitude. Based on these comparisons and considering that the critical pressure for the emergence of superconductivity in CaFe_2As_2 is much lower than those in BaFe_2As_2 and SrFe_2As_2 , we speculate that the tip-induced gap is of the pressure-induced Cooper pairing.

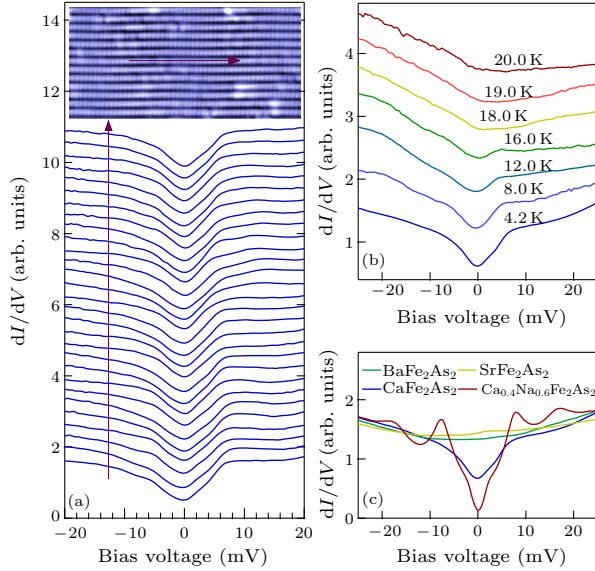


Fig. 1. (a) Line-cut spectra taken on the As dimer-row surface of CaFe_2As_2 ($V = -20\text{ mV}$, $I = 0.5\text{ nA}$ and $T = 4.2\text{ K}$). Spectra are offset for clarity. The inset displays the topographic image where the spectra are taken ($V = -50\text{ mV}$, $I = 0.5\text{ nA}$ and $T = 4.2\text{ K}$). (b) Temperature dependence of the spectra taken on CaFe_2As_2 ($V = -30\text{ mV}$ and $I = 1\text{ nA}$). Spectra are offset for clarity. (c) Comparison between spectra taken on CaFe_2As_2 , BaFe_2As_2 , SrFe_2As_2 and $\text{Ca}_{0.4}\text{Na}_{0.6}\text{Fe}_2\text{As}_2$ ($V = -30\text{ mV}$, $I = 1\text{ nA}$ and $T = 4.2\text{ K}$).

The effect of tip pressure on the local structure, particularly in the c -axis, can be visualized at a step edge that breaks the translational symmetry. Here we make the scanning tunneling across an atomically sharp step edge shown in Fig. 2(a). When we reduce the tunneling resistance (as reduce the tip-sample distance), the measured step edge height decreases as shown in Fig. 2(b). This observation qualitatively agrees with our expectation that reducing the tunneling resistance effectively increases the tip pressure.

If the tip pressure induces the Cooper pairing as we speculated, the gap size should have a noticeable dependence on the tip pressure. In Fig. 2(c) we show the spectra taken with different junction resistances. They demonstrate a strong dependence of the gap size on the junction resistance. In particular, the gap magnitude initially increases, then decreases with reducing the resistance as illustrated in the inset of Fig. 2(c). It is clear that the tip sample interaction indeed affects the local structure of the CaFe_2As_2 material. Such dependence of the gap size on the tip pressure

further supports the pressure-induced Cooper pairing scenario.

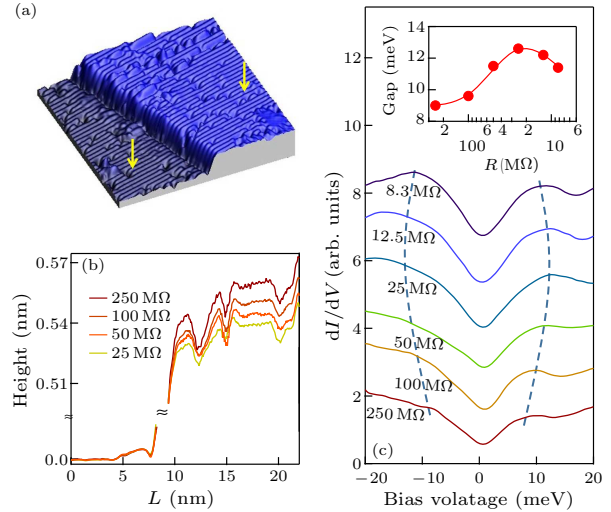


Fig. 2. (a) Topographic image of a step edge in 3D view ($V = -50\text{ mV}$, $I = 0.5\text{ nA}$ and $30 \times 30\text{ nm}^2$). (b) Tunneling junction resistance dependence of the line-cut profile across the step edge (with fixed $V = -50\text{ mV}$ and varying I). The line cut is made between the two points marked by arrows in (a). (c) Junction resistance dependence of the spectra (with fixed $V = -50\text{ mV}$ and varying I , $T = 4.2\text{ K}$). The blue dashed lines are a guide to the eyes. Spectra are offset for clarity. The inset shows the gap size evolution as a function of the resistance. The red solid lines are a guide to the eyes. All these data are acquired at 4.2 K .

In addition to the superconductivity, a collapse tetragonal phase can also be introduced by applying pressure in CaFe_2As_2 .^[7] There have long been debates on whether such pressure-induced superconductivity arises in the collapse tetragonal phase,^[7] the tetragonal phase,^[9] or the orthorhombic phase.^[9–11] To find which phase the tip pressure-induced Cooper pairing is related to, we examine the symmetry of the lattice. Figure 3(a) shows a carefully calibrated high resolution topographic image of the As surface. The fast Fourier transform (FFT) of this image shows sharp Bragg peaks (inset of Fig. 3(a)), from which we can determine the key lattice parameters: $a_{\text{As-As}} = 3.95\text{ \AA}$, $b_{\text{As-As}} = 3.90\text{ \AA}$ and rhombic angle $\theta = 93.4^\circ$. It is clear that the As lattice undergoes a very weak orthorhombic distortion while a strong rhombic distortion. Assuming that the lower Fe lattice matches the lattice distortion of the surface As lattice as illustrated in Fig. 3(b), the Fe lattice would have undergone a strong orthorhombic distortion ($(a_{\text{Fe-Fe}} - b_{\text{Fe-Fe}})/(a_{\text{Fe-Fe}} + b_{\text{Fe-Fe}}) = (\tan(\theta/2) - 1)/(\tan(\theta/2) + 1) = 3.0\%$). It is important to note that, according to our experimental observations, this orthorhombicity value does not depend on the junction resistance, and such a value also agrees with our FFT study of the BaFe_2As_2 material and with the previous STM study on the deeply under-doped Co-Ca122

material.^[16] Therefore, the tip pressure-induced local pairing must have arisen from the orthorhombic phase.

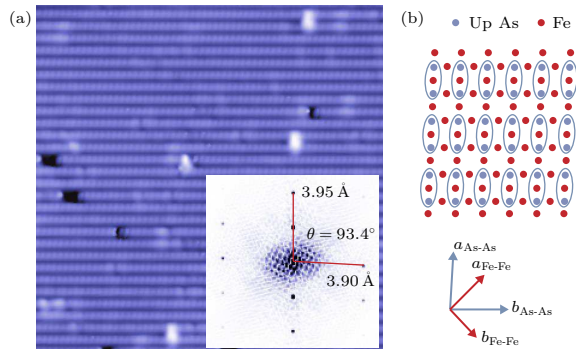


Fig. 3. (a) Topographic image of the As surface ($V = -50$ mV, $I = 0.5$ nA, 23×23 nm² and $T = 4.2$ K). The inset shows the FFT image of the topography. By measuring the position of the Bragg spots we can determine the surface lattice parameters: $2a_{\text{As-As}} = 2 \times 3.95$ Å, $b_{\text{As-As}} = 3.90$ Å and $\theta = 93.4^\circ$. (b) Schematic diagram of the surface distortion.

Finally, we point out several issues regarding the tip pressure-induced Cooper pairing in the Orthorhombic phase. First, as the STM tip presses the material at an atomic scale, the induced Cooper pairing has to be a very local phenomenon. In addition, the non-monotonic variation of the pairing gap magnitude with different tip pressures essentially agrees with the experimental finding that there is quite generally an optimum Fe-As bonding angle for iron-based superconductivity,^[17] which further suggests that the local Fe-As interaction controls the Cooper pairing strength. Secondly, the lack of well-defined coherent peaks in the tunneling spectra would suggest a weak phase coherence of the Cooper pairing. As the tip pressure is very local, the number of the total paired electrons is limited, therefore the phase fluctuation would be very strong. Thirdly, as mentioned previously, though the tip pressure-induced incoherent gap is compatible with the orthorhombic structural phase, there is no clear correlation between the Cooper pairing strength and the orthorhombicity, due to the fact that we observe no variation of the orthorhombicity when the tip pressure changes. It is then natural to conjecture that the local pairing strength is sensitive to the Fe-As coupling determined by the Fe-As height. Lastly, we propose that the tip pressure effects can be more accurately characterized by the combination of atomic force microscopy and STM with the same junction setup.

In summary, using STM/S, we have observed an incoherent gap structure in CaFe₂As₂ in its or-

thorhombic phase, which is attributed to the tip pressure-induced local Cooper pairing. This observation also demonstrates that the local As-Fe-As coupling determined by the Fe-As height is very crucial to the Cooper pairing strength in this material.

References

- [1] Torikachvili M S, Bud'ko L S, Ni N and Canfield P C 2008 *Phys. Rev. Lett.* **101** 057006
- [2] Park T, Park E, Lee H, Klimczuk T, Bauer E D, Ronning F and Thompson J D 2008 *J. Phys.: Condens. Matter* **20** 322204
- [3] Stewart G R 2011 *Rev. Mod. Phys.* **83** 1589
- [4] Patricia L, Alireza Y T, Chris K, Jack G, Chiara M P, Jacqueline M C, Suchitra E S and Gilbert G L 2009 *J. Phys.: Condens. Matter* **21** 012208
- [5] Lv B, Deng L, Gooch M, Wei F, Sun Y, Meen J K, Xue Y Y, Lorenz B and Chu C W 2011 *Proc. Natl. Acad. Sci. USA* **108** 15705
- [6] Yu W, Aczel A A, Williams T J, Bud'ko S L, Ni N, Canfield P C and Luke G M 2009 *Phys. Rev. B* **79** 020511(R)
- [7] Kreyssig A, Green M A, Lee Y, Samolyuk G D, Zajdel P, Lynn J W, Bud'ko S L, Torikachvili M S, Ni N, Nandi S, Leao J, Poulton S J, Argyriou D N, Harmon B N, McQueeney R J, Canfield P C and Goldman A I 2008 *Phys. Rev. B* **78** 184517
- [8] Prokeš K, Kreyssig A, Ouladdiaf B, Pratt D K, Ni N, Bud'ko S L, Canfield P C, McQueeney R J, Argyriou D N and Goldman A I 2010 *Phys. Rev. B* **81** 180506(R)
- [9] Baek S H, Lee H, Brown S E, Curro N J, Bauer E D, Ronning F, Park T and Thompson J D 2009 *Phys. Rev. Lett.* **102** 227601
- [10] Goko T, Aczel A A, Baggio-Saitovitch E, Bud'ko S L, Canfield P C, Carlo J P, Chen G F, Dai P C, Hamann A C, Hu W Z, Kageyama H, Luke G M, Luo J L, Nachumi B, Ni N, Reznik D, Sanchez-Candela D R, Savici A T, Sikes K J, Wang N L, Wiebe C R, Williams T J, Yamamoto T, Yu W and Uemura Y J 2009 *Phys. Rev. B* **80** 024508
- [11] Kawasaki S, Oka T, Tabuchi T, Wang X F, Chen X H and Zheng G Q 2011 *J. Phys. Chem. Solids* **72** 501
- [12] Huang Y B, Richard P, Wang J H, Wang X P, Shi X, Xu N, Wu Z, Li A, Yin J X, Qian T, Lv B, Chu C W, Pan S H, Shi M and Ding H 2013 *Chin. Phys. Lett.* **30** 017402
- [13] Li A, Yin J X, Wang J H, Wu Z, Ma J H, Sefat A S, Sales B C, Mandrus D G, Jin R Y, Zhang C L, Dai P C, Lv B, Liang X J, Hor P H, Ting C S and Pan S H 2016 arXiv:1602.04937 [cond-mat.supr-con]
- [14] Zhou X D, Cai P, Wang A F, Ruan W, Ye C, Chen X H, You Y Z, Weng Z Y and Wang Y 2012 *Phys. Rev. Lett.* **109** 037002
- [15] Evtushinsky D V, Zabolotnyy V B, Harnagea L, Yaresko A N, Thirupathiah S, Kordyuk A A, Maletz J, Aswartham S, Wurmehl S, Rienks E, Follath R, Büchner B and Borisenko S V 2013 *Phys. Rev. B* **87** 094501
- [16] Chuang T M, Allan M P, Lee J, Xie Y, Ni N, Bud'ko S L, Boebinger G S, Canfield P C and Davis J C 2010 *Science* **327** 181
- [17] Mizuguchi Y, Hara Y, Deguchi K, Tsuda S, Yamaguchi T, Takeda K, Kotegawa H, Tou H and Takano Y 2010 *Supercond. Sci. Technol.* **23** 054013